



Spring Vale Primary

Weekly News



<u>Week Beginning: 21st January</u>		<u>Assembly Theme: People who inspire us</u>	
Breakfast Club is available each day from 7.45 am (cost £2.00 per pupil, per session)			
Aces after school childcare - representatives available from 3 pm each day			
MON	🕒 After School Club: Gymnastics (Y1) - <i>finishes at 4 pm</i> -Session 2 of 5		
TUES	🕒 AM - Y5 swimming - don't forget your kit! 🕒 After School Club: Street Dance (Y5) - <i>finishes at 4 pm</i> -Session 2 of 4 Maths boosters - various Y6 children		
WEDS	🕒 No Soccer 2000 this half term due to the hall extension. Hopefully we can re-start this after half term 🕒 6 pm - Full Governing Body Meeting		
THURS	🕒 Junior brass - Unfortunately, due to matters out of our control, there will be no brass tuition for the next couple of weeks. We will let children know as soon as this is resolved. 🕒 After School Club: English boosters - various Y6 children		
FRI	🕒 After School Club: Sports Club (Y4) - <i>finishes at 4 pm</i> - Session 2 of 5 🕒 Football match away at Eastfield Primary		
<u>Percentage Attendance week ending: 11th January (95.2%)</u>			
Rec Beech: 94.8		Rec Willow: 98.0	Y1: 94.6
Y3: 91.7		Y4: 97.5	Y5: 92.2
AM Nursery: 90.0		PM Nursery: 80.3	Y2: 97.4
			Y6: 95.8

2+2=4 ABC
2+2=4 ABC

- ☺ **Building update** - the brick walls are almost complete on the dance studio. The 1st floor screed in the two storey build has now been done. First fix electrical and plumbing are almost finished in the new block.
- ☺ Please note **ALL** PE lessons take place outside unless it is raining - as it is an outdoor PE lesson, children can wear tracksuits, hats and gloves for these lessons. **For health and safety reasons, earrings should be removed for PE lessons.** If your child is unable to remove their earrings themselves, parents should take them out at home before they come to school or send in plasters for them to be covered over.
- ☺ The easiest way to pay for dinner money, fruit, milk money, school trips etc is by using our online payments system (SIMS Agora). Registration letters containing instructions and invitation codes were sent out to all pupils in November. If you need another copy of the letter, please contact Mrs Wynne.
- ☺ The deadline for milk money has now passed. We will not be accepting any further payments for milk this term.
- ☺ Diary dates for the Spring Term:-
 - ☺ **Tuesday 12th February, 3.30 pm - Parent Interviews**
 - ☺ **Thursday 14th February, 5 pm - Parent Interviews**
 - ☺ **Half Term: 18 - 22 February**
 - ☺ **Mon 4th March - Thurs 7th March - Book Fair in the school hall**
 - ☺ **Friday 12th April, 3.15 pm - children break up for Easter holidays**
 - ☺ Children return to school on Monday 29th April

2+2=4 ABC
2+2=4 ABC

BOOK NOW!

www.bookwhen.com/ltt

WOLVERHAMPTON LIBRARIES

DIGITAL CREATORS CLUBS

FEBRUARY HALF TERM 2019

PHOTOGRAPHY ART AND DESIGN WORKSHOPS

10:30AM - 3PM

DATES

Monday 18th February 2019

Spring Vale Library, Bevan Ave, WV4 6SG

Tuesday 19th February 2019

Central Library, Snow Hill, WV1 3AX

Wednesday 20th February 2019

Penn Library, Coalway Avenue, Penn Rd, WV3 7LT

FREE ENTRY

**PLEASE BRING
YOUR OWN LUNCH**

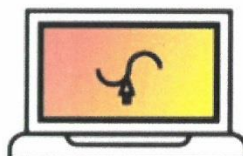
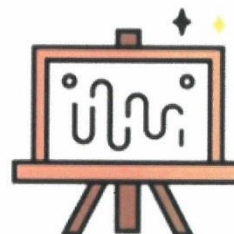
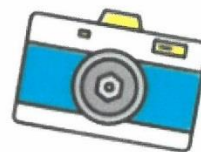
For more information email:

[mylibraryservice@
wolverhampton.gov.uk](mailto:mylibraryservice@wolverhampton.gov.uk)

01902 552025



@WolvesLibraries



LEARNING
TECHNOLOGIES

CITY OF
WOLVERHAMPTON
COUNCIL