



# Spring Vale Primary Weekly News



| <u>Week Beginning: 17<sup>th</sup> September</u>                                      |  | <u>Assembly Theme: Changes</u> |
|---|--|--------------------------------|
| Breakfast Club is available each day from 7.45 am (cost £2.00 per pupil, per session) |  |                                |
| Aces after school childcare - representatives available from 3 pm each day            |  |                                |
| MON   | ☺ <b>After School Club:</b> Street Dance (Y1) - <i>finishes at 4 pm</i> - session 1  |                                |
| TUES  | ☺ AM - Y4 swimming - don't forget your kit!<br>☺ <b>After School Club:</b> Gymnastics (Y4) - <i>finishes at 4 pm</i> - session 1 |                                |
| WEDS  | ☺ <b>After School Club:</b> Soccer 2000 (Y1 - Y6) - finishes at 4.15 pm - this club has to be paid for                           |                                |
| THURS   | ☺ PM - Junior brass - don't forget your instrument!  |                                |
| FRI   | ☺ <b>After School Club:</b> Sports Club (Y5) - <i>finishes at 4 pm</i> - session 1   |                                |
| <u>Percentage Attendance week ending: 7<sup>th</sup> September</u>                    |  |                                |
| Rec Willow: 98.2  | Y2: 98.7   | Y5: 94.5                       |
| Rec Beech: 91.6   | Y3: 98.0   | AM Nursery: 96.4               |
| Y1: 98.4  | Y4: 94.2   | PM Nursery: 100                |

2+2=4 ABC 2+2=4 ABC

2+2=4 ABC

2+2=4 ABC

2+2=4 ABC 2+2=4 ABC

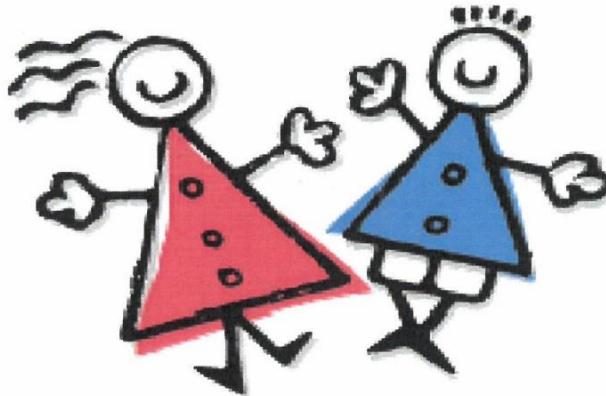
- ☺ **Attendance will be our main focus this academic year, (as stated in our Ofsted report) particularly persistent absence. Any children falling below 92% will automatically be referred to our Educational Welfare Officer who may wish to draw up a Parenting Contract.**
- ☺ The deadline for milk money has now passed - we will not be accepting any further payments.
- ☺ Please note all clubs will be dismissed from the main door next to the Nursery entrance.
- ☺ You can view the weekly newsletter on our website - [www.springvaleprimary.co.uk](http://www.springvaleprimary.co.uk)
- ☺ On Wednesday, one of the workmen had his motorbike stolen from outside School at around 3 pm. It was parked in one of the bays directly opposite school in between the shops and the flats and secured with a steering lock. The suspects were wearing hi-vis vests and hardhats. They pushed the bike towards the Birmingham New Road (slip road). The theft has been reported to the police. If any parents have any information or saw anything suspicious, please let us know.
- ☺ Dinner money is now £2.30 per day, £11.50 per week (£1.30 per day, £6.50 per week for families eligible for flexible charging)
- ☺ If you have changed your phone number or address during the summer holiday, please ensure you have notified the office
- ☺ All medicines/inhalers were sent home with children in July - if your child still needs an inhaler, please make sure we have one in school

# A.C.E.S. EAST PARK

## October Playscheme 2018

Hollington Rd entrance, W-ton WV1 2DS

07759 988155 (on site mobile phone) or 07712 165287 (out of hours)



### Opening times:

7.30am to 6.00pm Monday to Friday

Monday 29th October to Friday 2nd November, 2018

### Costs:

Full Day - £20.00

£1 extra for breakfast & 50p afternoon snack / Trips extra

Packed lunch required / suitable clothing

Half day 7.30am to 1pm & 1pm to 6pm £11/session

SESSIONAL Hourly rate £3.50 (please prebook)

(contracts required for all Childcare requirements including the Childcare element of Working Tax, Training providers and Employment Voucher Schemes)

**Please book your place in advance**

**FOR FURTHER DETAILS & TO BOOK YOUR PLACE, PLEASE DO NOT HESITATE TO CALL OR TEXT**

**07759 988155 (on site mobile phone) or 07712 165287 (out of hours)**

Email: [acestrinity@hotmail.com](mailto:acestrinity@hotmail.com)